

# FDB - 19024E Instruction Manual

## Fiber Access Terminal Box



## Instruction Manual

# FDB - 19024E Instruction Manual

## 1. Description:

FDB-19024E fiber access termination box is able to hold up to 24 subscribers. It is used as a termination point for the feeder cable to connect with drop cable in FTTx network system. It integrates fiber splicing, splitting, distribution, storage and cable connection in one solid protection box.

## 2. Features:

- 1.Total enclosed structure.
2. Material: PC+ABS , wet-proof,water-proof,dust-proof,anti-aging,protection level up to IP65.
3. Clamping for feeder cable and drop cable, fiber splicing, fixation, storage, distribution...etc all in one.
4. Neat cabling, easy for maintenance and expansion.
5. Box can be installed by the way of wall-mounted or poled-mounted, suitable for both indoor and outdoor uses.

## 3. Specification:

### 1.Environmental specification

Working temperature:-40℃~+60℃

Relative humidity:≤85% (+30℃)

Atmospheric pressure:70KPa~106Kpa

### 2.Main technical specification

Insertion loss:≤0.3dB

UPC return loss:≥50dB

APC return loss:≥55dB

Life of insertion and extraction:>1000 times

### 3.Thunder-proof technical specification

The grounding device is isolated with the cabinet, isolation resistance is less than  $2 \times 10^4 \text{M}\Omega/500\text{V}$  (DC) ;

$\text{IR} \geq 2 \times 10^4 \text{M}\Omega/500\text{V}$

The withstand voltage between grounding device and cabinet is no less than 3000V (DC) /min, no puncture, no flashover

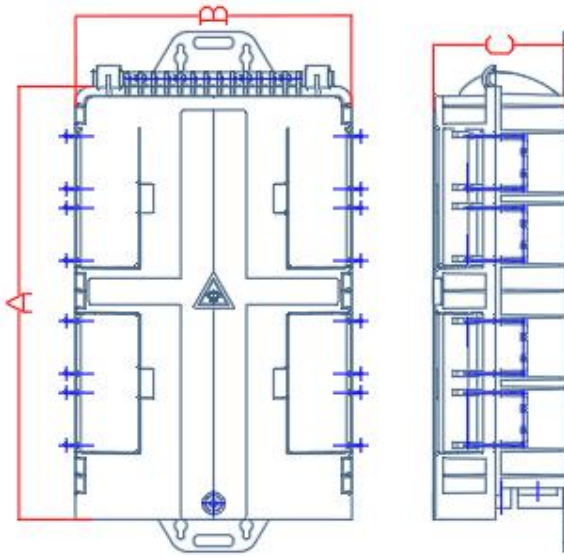
;  $U \geq 3000\text{V}$

## 4. Configuration table:

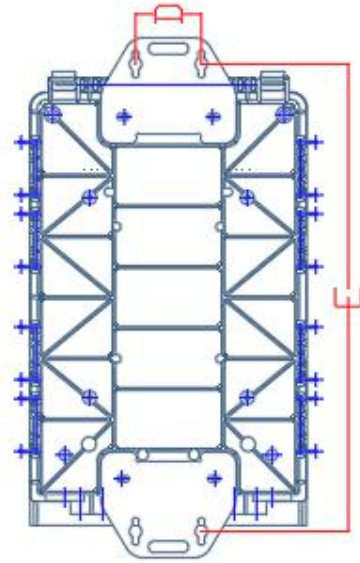
Table 1 Model and configuration

Model	Size (Pic 1)	Max Capacity			Installation Size (Pic 2)
	AxBxC(mm)	SC adapters	splicing	PLC	DxE (mm)
FDB-19024E	340*220*95	24	4 traysx24F	1:8*4pcs	50*335

# FDB-19024E Instruction Manual

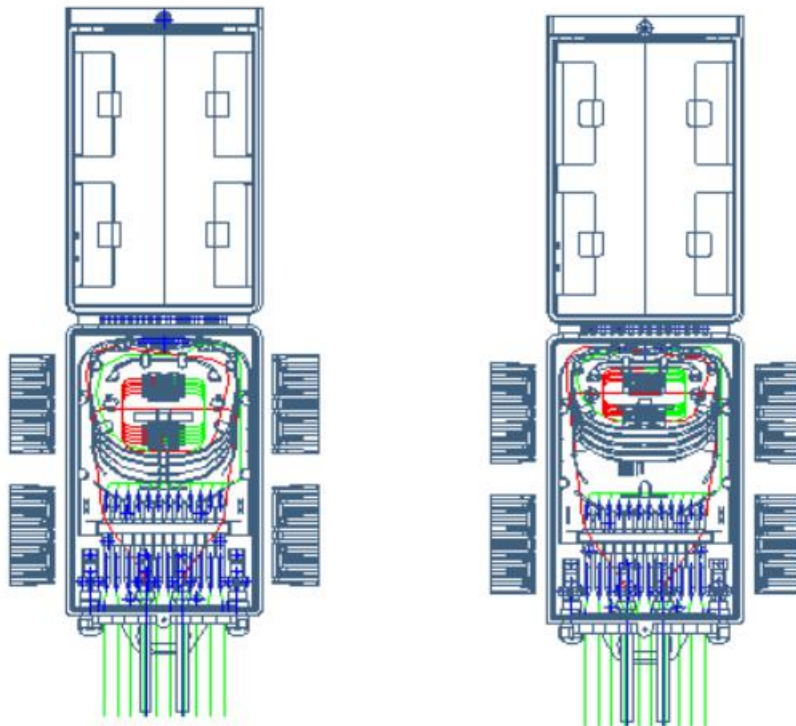


Pic 1 Box Size



Pic 2 Installation Size

## 5. Product inside structure and cable ways:



## 6. Installation:

### 1. Wall-mounted installation

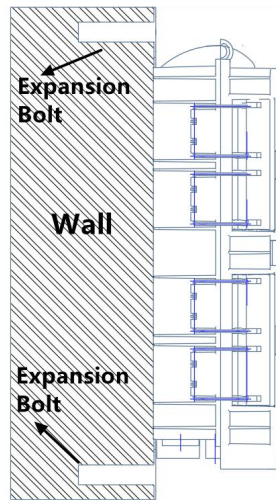
Drill 4 holes over the wall based on the installation size in table 1, place the 4pcs of expansion bolt  $\Phi 4 \times 40$ , connect the box with wall mounted plates(top and bottom 2pcs) first, then match

# FDB-19024E Instruction Manual

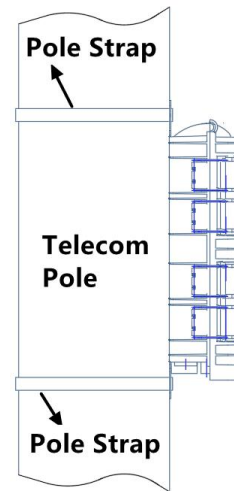
up the holes of wall mounted plates with expansion bolts and use bolt to fasten. (Pic 3)

## 2. Pole-mounted installation

Fix 2pcs of the pole straps to the telecom pole. (Pic 4)



Pic 3 Wall mounted installation



Pic 4 Pole mounted installation

## 7. Accessories

1. Instructions \* 1
2. key \* 1
3. Wall mounted bracket \* 2
4. Accessory Bag \* 1
5. Pole strap \*2(optional)